

# DUMPS ARENA

## Administration of Veritas Enterprise Vault 11.x

Veritas VCS-319

Version Demo

Total Demo Questions: 10

Total Premium Questions: 134

Buy Premium PDF

<https://dumpsarena.com>

[sales@dumpsarena.com](mailto:sales@dumpsarena.com)

dumpsarena.com

## Topic Break Down

Topic	No. of Questions
Topic 1, Explain the technological benefits of EV 11 for Exchange	3
Topic 2, Describe the components of EV 11 for Exchange	5
Topic 3, Identify the differences between EV 11 for Exchange architecture	2
Topic 4, Identify EV 11 for Exchange prerequisites	4
Topic 5, Describe process for installing and configuring EV 11 components	5
Topic 6, Describe the procedure for managing EV 11 Vault Site components	11
Topic 7, Identify how to apply appropriate retention categories	3
Topic 8, Describe the Exchange mailbox archiving process	10
Topic 9, Explain the process for managing Indexes	8
Topic 10, Distinguish among EV 11 roles-based administration roles	2
Topic 11, Describe the process for managing EV Policies with VAC	10
Topic 12, Describe the process for importing and exporting archives	8
Topic 13, Describe EV 11 for Exchange client functionality	12
Topic 14, Describe creation and maintenance of vault storage	6
Topic 15, Describe the EV 11 reporting and monitoring prerequisites	4
Topic 16, Interpret the output from EV 11 for Exchange Reporting Services	1
Topic 17, Verify EV 11 for Exchange is installed and functioning	3
Topic 18, , Identify EV 11 for Exchange options for monitoring archiving	4
Topic 19, Describe the tools and steps required to troubleshoot EV 11	13
Topic 20, Identify which EV 11 for Exchange components require backup	4
Topic 21, Topic 21, Describe how to back up and recover EV 11 for Exchange	4
Topic 22, Topic 22, Describe the EV 11 for Exchange High Availability options	5
Topic 23, Topic 23, Define steps to implement and employ EV 11 High Availability	7
<b>Total</b>	<b>134</b>

**QUESTION NO: 1**

Which status does the Indexing Summary tool display when there are orphaned index entries found in the index volume?

- A. Missing items
- B. Failed items
- C. Deleted items
- D. Extra items

**ANSWER: D**

**QUESTION NO: 2**

A single Vault Store can contain a number of Partitions, which can be on different storage types.

On which two storage types can vault store partitions be placed? (Select two.)

- A. NAS with NFS
- B. NAS with CIFS
- C. EXT3
- D. Content-Addressable Storage
- E. HPFS

**ANSWER: B D**

**QUESTION NO: 3**

Which two components must be accessible to the Enterprise Vault server for the Building Blocks failover method? (Select two.)

- A. Index Locations
- B. Vault Cache
- C. Shopping Location
- D. Storage Queue
- E. MSMQ

**ANSWER: A D**

**QUESTION NO: 4**

A backup administrator is recovering from a system crash. The Symantec Enterprise Vault 11.x for Exchange (EV) SQL databases and Vault Store partitions have been recovered.

Which two additional components are required to restore the EV server? (Select two.)

- A. Indexes
- B. MSMQ
- C. Application binaries
- D. Temp directory
- E. Vault Cache location

**ANSWER: A C**

**QUESTION NO: 5**

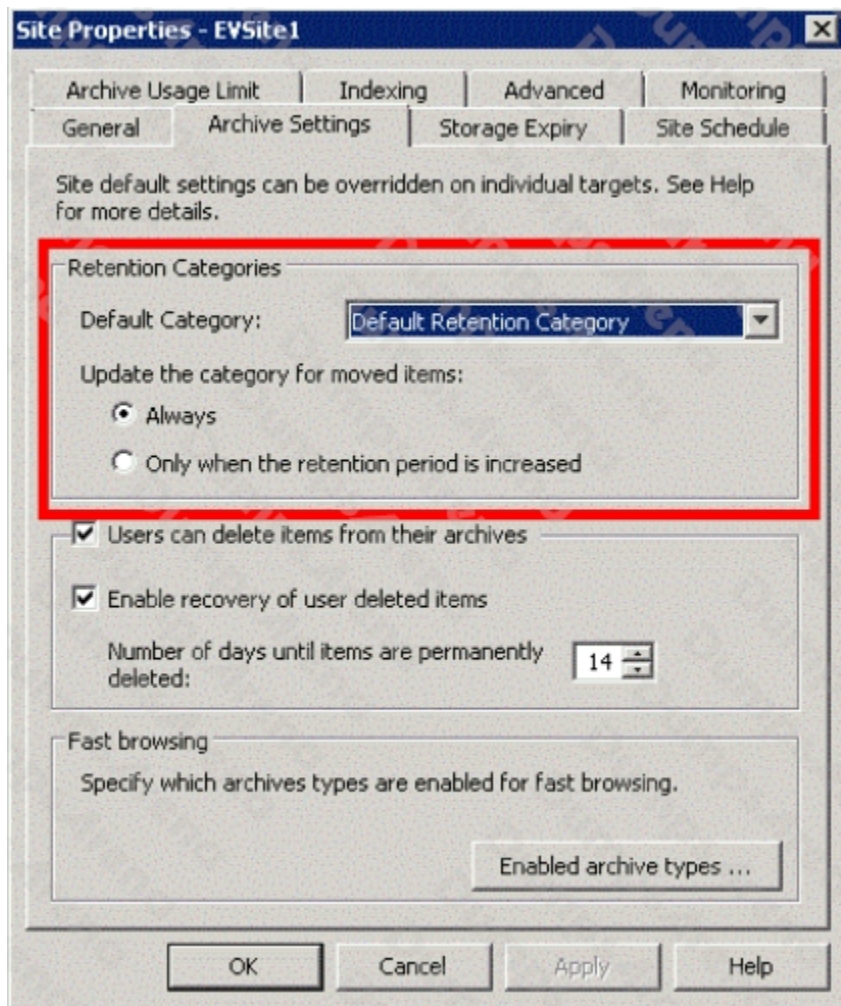
Which two user configuration choices are available within the Preferences menu of Enterprise Vault Search (EVS)? (Select two.)

- A. Configure multiple mailboxes to access for searching
- B. Select the position of the reading pane or turn it off
- C. Enable Hit Highlighting and specify the color
- D. Choose custom company logo to display in the results page
- E. Add additional sidebars for other archiving targets such as File System Archiving

**ANSWER: B C**

**QUESTION NO: 6**

Refer to the Exhibit.



What does the Site Setting shown in the red box apply to?

- A. pending shortcut items
- B. mailbox shortcuts
- C. archives moved using the Move Archive wizard
- D. Storage Queue items

**ANSWER: B**

#### QUESTION NO: 7

A new staff member needs access to all options in the Enterprise Vault Administration Console.

Which actions must the administrator perform to provide the new employee with the necessary privileges?

- A. log in with a Power Administrator account and use Directory > Authorization Manager

- B. log in with the Vault Service account and use Directory > Authorization Manager
- C. log in with a Power Administrator account and clone the access definitions
- D. log in with the Vault Service account and clone the access definitions

**ANSWER: B**

#### QUESTION NO: 8

An administrator is experiencing an issue that a user complains that the Virtual Vault fails to appear in the Outlook Navigation Pane. The administrator has confirmed that Virtual Vault is enabled for the user in the policy setting.

Which file on the user's PC should the administrator check next?

- A. Webapp.ini
- B. MAPISVC.INF
- C. VC\_desktop.txt
- D. web.config

**ANSWER: B**

#### QUESTION NO: 9

Which two Exchange server roles require installation of Symantec Enterprise Vault 11.x for Exchange extensions to provide users access to their archived content via Outlook Web Access (OWA) in a mixed Microsoft Exchange 2003 and 2007 environment? (Select two.)

- A. Hub Transport Server
- B. Front-end Server
- C. Back-end Server
- D. Mailbox Server
- E. Client Access Server

**ANSWER: C E**

#### QUESTION NO: 10

An Outlook 2010 user contacts the Help desk in reference to an Symantec Enterprise Vault 11.x issue. The user is requested to provide the Enterprise Vault Outlook Add-In version.

Where can the user locate this information in Outlook 2010?

- A. Enterprise Vault > Help > About Symantec Enterprise Vault
- B. Enterprise Vault > Options > About Symantec Enterprise Vault
- C. File > Enterprise Vault > About Symantec Enterprise Vault
- D. File > Info > About Symantec Enterprise Vault

**ANSWER: C**

DUMPS ARENA