

# DUMPS ARENA

## vSphere 6 Foundations

VMware 2V0-620

Version Demo

Total Demo Questions: 15

Total Premium Questions: 212

Buy Premium PDF

<https://dumpsarena.com>

[sales@dumpsarena.com](mailto:sales@dumpsarena.com)

dumpsarena.com

**QUESTION NO: 1**

Why are some virtual machines orphaned after rebooting a High Availability (HA) enabled host?

- A. The Orphaned virtual machines have HA restart disabled.
- B. The Orphaned virtual machines moved recently and the change did not persist.
- C. The host is attached to failed storage.
- D. The host just came out of maintenance mode.

**ANSWER: A**

**QUESTION NO: 2**

Which two VMware software components can be updated by Update Manager? (Choose two.)

- A. ESX 3.5
- B. Virtual Appliances
- C. vCenter Server
- D. Guest OS

**ANSWER: B D**

**Explanation:**

Reference: <http://www.vmware.com/support/vsphere5/doc/vsphere-update-manager-51-release-notes.html>

**QUESTION NO: 3**

Which tool defines the Image Profiles used with Auto Deploy?

- A. The vSphere PowerCLI add-deployrule cmdlet
- B. The vSphere PowerCLI new-deployrule cmdlet
- C. The vSphere CLI add-deployrule command
- D. The vSphere CLI new-deployrule command

**ANSWER: B**

**Explanation:**

Reference: <http://www.vmware.com/files/pdf/techpaper/Whats-New-VMware-vSphere-50-Platform-Technical-Whitepaper.pdf>  
(page 9, auto deploy rules engine)

## QUESTION NO: 4

An administrator attempts to create a Thick Provisioned Virtual Disk (VMDK) on an NFS datastore; but it fails.

Which two reasons would explain the failure? (Choose two.)

- A. Datastore is on an NFS 3 storage server that does not support Hardware Acceleration
- B. Datastore is on an NFS 4.1 storage server
- C. Only VMFS datastores support "Thick Provisioned" VMDK
- D. The NFS datastore was not created on a "Thick Provisioned" device

**ANSWER: A B**

## QUESTION NO: 5

An administrator is installing vCenter Server for an environment that has 40 ESXi 6.x Hosts and 150 virtual machines.

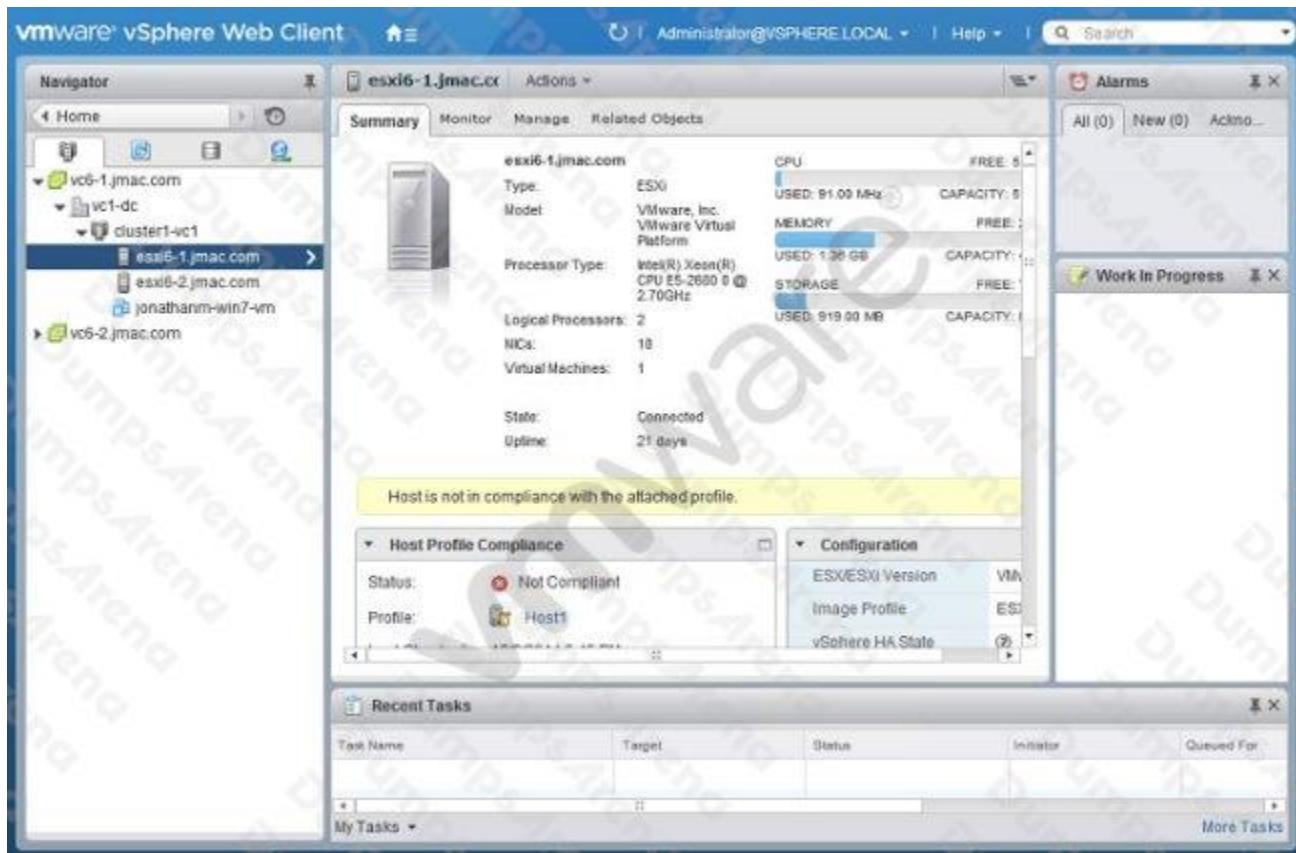
Which database would meet the minimal requirements needed for this task?

- A. vFabric Postgres
- B. Microsoft SQL Express 2008
- C. Microsoft SQL Server 2014
- D. Oracle 11g

**ANSWER: C**

## QUESTION NO: 6

Refer to the Exhibit.



An administrator logs into the vSphere Web Client and sees the warning shown in the Exhibit.

During a change control window, the warning was addressed.

What should be done to verify that the host is no longer showing the warning?

- A. Run a Remediate host operation.
- B. Recheck the compliance of the host.
- C. Restart the host to get rid of the warning.
- D. Install VMware tools to clear the warning.

**ANSWER: B**

## QUESTION NO: 7

Which two NFS Protocol versions does vSphere 6 support? (Choose two.)

- A. Version 3
- B. Version 3.1
- C. Version 4

D. Version 4.1

**ANSWER: A D**

**QUESTION NO: 8**

When modifying a vApp, which two vSphere entities can be added? (Choose two.)

- A. A resource pool
- B. A network pool
- C. A vApp
- D. A folder

**ANSWER: A C**

**QUESTION NO: 9**

What is the default load balancing policy for a newly created VMkernel port on a vSphere Distributed Switch?

- A. Route based on originating virtual port ID
- B. Route based on IP Hash
- C. Route based on source mac address
- D. Route based on physical NIC load

**ANSWER: A**

**QUESTION NO: 10**

What virtual machine action listed below can be performed on a template?

- A. Power on
- B. Clone
- C. Edit Settings
- D. Migrate

**ANSWER: B**

**Explanation:**

Reference: <http://robertparten.com/vmware-difference-between-clone-and-template/>

## QUESTION NO: 11

What are two prerequisites for installing the vCenter Server application? (Choose two.)

- A. The system vCenter Server is installed on must be a physical machine.
- B. A valid vSphere vCenter license must be obtained before installation.
- C. vCenter must be in the same network as the hosts if supporting vSphere Storage Appliance Cluster.
- D. The system vCenter Server is installed on cannot be a domain controller.

**ANSWER: C D**

**Explanation:**

Reference: [https://pubs.vmware.com/vsphere-4-esx-vcenter/index.jsp?topic=/com.vmware.vsphere.installclassic.doc\\_41/common/install/c\\_vc\\_pre.html](https://pubs.vmware.com/vsphere-4-esx-vcenter/index.jsp?topic=/com.vmware.vsphere.installclassic.doc_41/common/install/c_vc_pre.html)

## QUESTION NO: 12

How are ports scaled on vSphere Standard Switches (vSS)?

- A. Ports on a vSS can be dynamically scaled up and down.
- B. Ports on a vSS can only be statically scaled up or down.
- C. Ports on a vSS can only be dynamically scaled down.
- D. Ports on a vSS can only be dynamically scaled up.

**ANSWER: A**

## QUESTION NO: 13

What two Advanced IP Allocation Schemes are available? (Choose two.)

- A. Fixed
- B. DHCP
- C. OVF Environment
- D. Transient

**ANSWER: B C**

**QUESTION NO: 14**

What are three valid disk configurations for the vSphere Data Protection 6.x Appliance? (Choose three.)

- A. 500GB
- B. 1TB
- C. 1.5TB
- D. 2TB
- E. 4TB

**ANSWER: A B C**

**QUESTION NO: 15**

How many Link Aggregation Groups (LAGs) can be configured on a vSphere 6.x Distributed Switch?

- A. 64
- B. 96
- C. 128
- D. 256

**ANSWER: A**