

DUMPS ARENA

Managing Industrial Networks with Cisco Networking

Cisco 200-401

Version Demo

Total Demo Questions: 15

Total Premium Questions: 66

Buy Premium PDF

<https://dumpsarena.com>

sales@dumpsarena.com

dumpsarena.com

Topic Break Down

Topic	No. of Questions
Topic 1, Install, Replace, and Remove an End Device	9
Topic 2, Install, Replace, and Remove an Industrial Device	15
Topic 3, Install, Replace, and Remove Cables	5
Topic 4, Troubleshooting	19
Topic 5, Maintain Appropriate End Devices and Industrial Network Infrastructure Devices	18
Total	66

QUESTION NO: 1

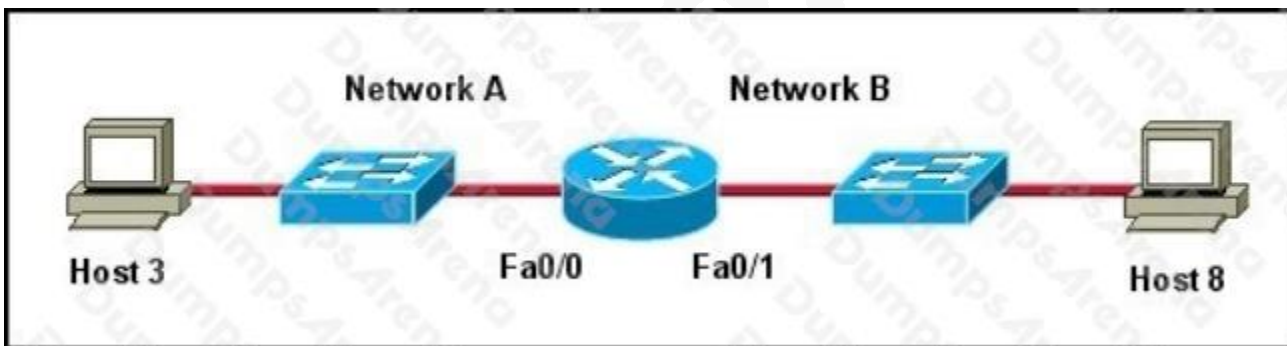
What is the purpose of Spanning Tree Protocol?

- A. to prevent routing loops
- B. to create a default route
- C. to provide multiple gateways for hosts
- D. to maintain a loop-free Layer 2 network topology
- E. to enhance the functions of SNMP

ANSWER: D

QUESTION NO: 2

Exhibit:



Refer to the exhibit. Host 3 on Network A is sending data to Host 8 on Network

B. Which address is the default gateway of Host 3?

- A. the address of the switch interface that is connected to router interface Fa0/0
- B. Which address is the default gateway of Host 3?
the address of the switch interface that is connected to router interface Fa0/1
- C. the address of the host that is connected to Network A
- D. the address of the host that is connected to Network B
- E. the address of the router interface Fa0/0
- F. the address of the router interface Fa0/1

ANSWER: E

QUESTION NO: 3

At which Layer would you use trace route to validate the path?

- A. Layer 1
- B. Layer 2
- C. Layer 3
- D. Layer 4

ANSWER: C

QUESTION NO: 4

Which three of the following components must be elected before the Spanning Tree Protocol can converge in a switched LAN? (Choose three.)

- A. designated ports
- B. duplex operating mode
- C. fast mode ports
- D. root bridge
- E. root ports
- F. BDPU priority

ANSWER: A D E

QUESTION NO: 5

What should be done with unused conductors in copper unshielded or shielded twisted-pair network cables?

- A. terminate in their characteristic impedance
- B. trim back and properly insulate
- C. connect to protective earth
- D. splice to a used conductor

ANSWER: A

QUESTION NO: 6

Which two ports does EtherNet/IP use to communicate? (Choose two.)

- A. TCP 44818
- B. UDP 44818
- C. TCP 502
- D. UDP 502
- E. TCP 2222
- F. UDP 2222

ANSWER: A F

QUESTION NO: 7

What two things does a router do when it forwards a packet? (Choose two.)

- A. switches the packet to the appropriate outgoing interfaces
- B. computes the destination host address
- C. determines the next hop on the path
- D. updates the destination IP address
- E. forwards ARP requests

ANSWER: A C

QUESTION NO: 8

An Ethernet cable is attached to a PC NIC and then attached to a switch port. The PC power is turned on and the switch port link LED turns green. The link light indicates what two conditions? (Choose two.)

- A. Layer 2 communication has been established between the PC and switch.
- B. The PC has received a DHCP address.
- C. Traffic is being sent from the switch to the PC.
- D. If flashing, the green LED indicates port speed of 100 Mb/s.

- E. The Layer 1 media is functioning between the PC and switch.
- F. The switch port is functioning as a half-duplex connection.

ANSWER: A E

QUESTION NO: 9

With what are APC connectors used?

- A. Category 6a cables that need tight radius bends
- B. copper network cables in corrosive environments
- C. single-mode fiber-optic cables to reduce return loss
- D. high-density copper patch panels

ANSWER: C

QUESTION NO: 10

Which protocol is a secure alternative to Telnet?

- A. SSH
- B. FTP
- C. SMTP
- D. SNMP
- E. HTTP

ANSWER: A

QUESTION NO: 11

What are the two most relevant factors in determining the class of administration that is required to maintain the telecommunications infrastructure? (Choose two.)

- A. the size of the infrastructure
- B. the complexity of the infrastructure
- C. the age of the infrastructure

- D. the industry that the infrastructure supports
- E. the physical environment of the infrastructure

ANSWER: A B

QUESTION NO: 12 - (DRAG DROP)

DRAG DROP

Select and Place:

Drag the steps on the left and arrange them in the order they should be completed when removing an industrial switch from a DIN rail on the right.	
Disconnect all cables and connectors from the front panel of the switch.	Step 1
Pull the bottom of the switch away from the DIN rail and lift the hooks off the top of the DIN rail.	Step 2
Turn off power to the switch.	Step 3
Release the latch from the DIN rail using a flat head screw driver.	Step 4

ANSWER:

Drag the steps on the left and arrange them in the order they should be completed when removing an industrial switch from a DIN rail on the right.	
	Turn off power to the switch.
	Disconnect all cables and connectors from the front panel of the switch.
	Release the latch from the DIN rail using a flat head screw driver.
	Pull the bottom of the switch away from the DIN rail and lift the hooks off the top of the DIN rail.

Explanation:

QUESTION NO: 13

What is a reason to use privileged EXEC mode on an industrial switch?

- A. to verify commands that you have entered

- B. to change terminal settings
- C. to configure VLAN parameters
- D. to configure parameters that apply to the entire switch

ANSWER: A

QUESTION NO: 14

For which three issues should fiber-optic network segments be tested? (Choose three.)

- A. attenuation
- B. near-end crosstalk
- C. length
- D. polarity
- E. jitter
- F. tensile stress

ANSWER: A C D

QUESTION NO: 15

What is a characteristic of cables that are used in articulating equipment arms?

- A. fiber-optic zip-cord construction
- B. shielded copper twisted pair
- C. high flex rated cable
- D. type PLTC cable

ANSWER: C