

DUMPS ARENA

HCIE - R&S written (Carrier IP)

Huawei H31-161

Version Demo

Total Demo Questions: 10

Total Premium Questions: 185

Buy Premium PDF

<https://dumpsarena.com>

sales@dumpsarena.com

dumpsarena.com

QUESTION NO: 1

In MPLS QoS, traffic policies are developed based on simple traffic classification and complex traffic classification. In traffic policies based on simple traffic classification, the service class, color, and drop priority of packets are reset based on the tags in packets. In traffic policies based on complex traffic classification, measures such as traffic policing, priority re-marking, packet filtering, policybased routing, and traffic sampling are implemented based on the traffic type. Generally, simple traffic classification is applied on border routers in DiffServ domains, and complex traffic classification core routers. QoS traffic policies are configured by performing the following operations:

1. Defines DiffServ domains and configuring a traffic policy.
2. Classifies traffic.
3. Defines traffic behaviors and configures characteristics of behaviors.
4. Defines a traffic policy and specifies actions for traffic categories.
5. Applies the traffic policy.
6. Configures L-LSP.
7. Configures reverse address check.
8. Adds interfaces to the DiffServ domains.

Which of the preceding operations are required when you configure simple traffic classification?

- A. 1 6 8
- B. 2 4 5 7
- C. 1 5 6
- D. 2 3 4 8

ANSWER: A**QUESTION NO: 2**

The edge routers of the MPLS network, partial interface configurations on the IP access side are as follows:

```
[Quidway]diffserv domain default
```

```
[Quidway-dsdomain-default]ip-dscp-inbound 10 phb ef green [Quidway-dsdomain-default]mpls-exp-outbound ef green map 5  
[Quidway-dsdomain-default]mpls-exp-inbound 4 phb ef green [Quidway-dsdomain-default]ip-dscp-outbound ef green map 18
```

```
[Quidway-dsdomain-default]quit[Quidway] interface GigabitEthernet 2/0/0 [Quidway-GigabitEthernet2/0/0] trust upstream  
default
```

[GigabitEthernet2/0/0] port-queue ef pq shaping 20 outbound

Which of the following statements about the preceding configurations are true?

- A. The trust upstream default command maps the DSCP priority to the corresponding EXP value when an IP packet enters the MPLS network and maps the EXP value to the corresponding DSCP priority when an IP packet leaves the MPLS network.
- B. If an IP packet with a DSCP value of 10 is sent to the MPLS network (non-PHP node) from GigabitEthernet 2/0/0, the corresponding EXP value is 5. If an MPLS packet with an EXP value of 4 is sent from GigabitEthernet 2/0/0, the DSCP value of the corresponding IP packet remains unchanged.
- C. The port-queue ef pq shaping 20 outbound command configures PQ scheduling and a maximum of 20 Mbit/s bandwidth for the EF queue when GigabitEthernet 2/0/0 sends IP packets.
- D. When GigabitEthernet 2/0/0 sends IP packets, the bandwidth of these sent IP packets can reach 1 Gbit/s if the EXP value is 4.

ANSWER: A C

QUESTION NO: 3

As shown in the figure, the bearer network is deployed in full mesh mode. For example, RTA uses the physical interface ATM 1/0/0. The interface is divided into ATM 10/0.2 connect to RTC and RTD, respectively. The GigabitEthernet 2/0/0 and GigabitEthernet 3/0/0 interface are used to set up a trunk as the VRRP heartbeat cable. The UMG work in active/standby mode. Media interface connected to RTA and RTB belong to VLAN 10. VRRP is enabled at the VLAN interface. RTA is the master router. The interface is configured as follows:

```
ATM1/0/0.1ATM1/0/0.2VLANIF 10Loopback 0VLAN 10 VRRP
Virtual IP address
RTA10.1.1.1/3010.1.1.5/30172.1.1.2/281.1.1.1/32172.1.1.1/28
RTB10.1.1.9/3010.1.1.13/30172.1.1.3/282.2.2.2/32172.1.1.1/28
RTC10.1.1.2/3010.1.1.14/30172.1.2.2/283.3.3.3/32172.1.2.1/28
RTD10.1.1.10/3010.1.1.6/30172.1.2.3/284.4.4.4/32172.1.2.1/28
```

Which of the following RTA configurations are correct in VLAN 10? A)

```
#
ospf
peer 10.1.1.2
peer 10.1.1.6
#
area 0.0.0.0
network 1.1.1.1 0.0.0.0
network 10.1.1.0 0.0.0.3
network 10.1.1.4 0.0.0.3
network 172.1.1.2 0.0.0.15
#
interface vlanif10
undo shutdown
ip address 172.1.1.2 255.255.255.240
vrp vrid 1 virtual-ip 172.1.1.1
vrp vrid 1 priority 110
vrp vrid 1 preempt-mode timer delay 0
#
```

B)

```
ospf
peer 10.1.1.2
peer 10.1.1.6
#
area 0.0.0.0
network 1.1.1.1 0.0.0.0
network 10.1.1.0 0.0.0.3
network 10.1.1.4 0.0.0.3
#

interface vlanif10

undo shutdown

ip address 172.1.1.2 255.255.255.240

vrrp vrid 1 virtual-ip 172.1.1.1

vrrp vrid 1 priority 110

vrrp vrid 1 preempt-mode timer delay 0

vrrp vrid 1 track atm1/0/0 reduced 50
#
```

C)

```
#
ospf
  spf-schedule-interval 1
  peer 10.1.1.2
  peer 10.1.1.6
#
  area 0.0.0.0
  network 1.1.1.1 0.0.0.0
  network 10.1.1.0 0.0.0.3
  network 10.1.1.4 0.0.0.3
#
  interface vlanif10
    undo shutdown
  ip address 172.1.1.2 255.255.255.240
  vrrp vrid 1 virtual-ip 172.1.1.1
  vrrp vrid 1 priority 110
  vrrp vrid 1 preempt-mode timer delay 0
#
```

D)

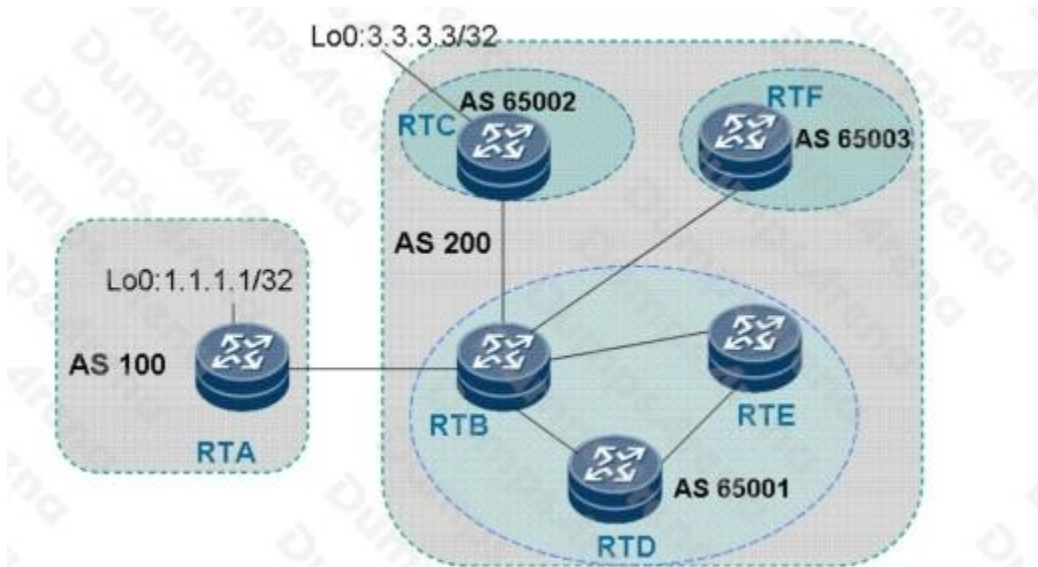
```
#
ospf
peer 10.1.1.2
peer 10.1.1.6
#
area 0.0.0.0
network 1.1.1.1 0.0.0.0
network 10.1.1.0 0.0.0.3
network 10.1.1.4 0.0.0.3
network 172.1.1.2 0.0.0.15
#
interface vlanif10
undo shutdown
ip address 172.1.1.2 255.255.255.240
vrrp vrid 1 virtual-ip 172.1.1.1
vrrp vrid 1 priority 110
```

- A. Option A
- B. Option B
- C. Option C
- D. Option D

ANSWER: D

QUESTION NO: 4

Refer to the exhibit.



As shown in the figure, RTA belongs to AS 100 and has an EBGP

neighbor relationship with RTB. RTB, RTC, RTD, RTE, and RTF belong to AS 200. RTB, RTD, and RTE are assigned to AS65001, RTC to AS65002, and RTF to AS65003.

1. When route 1.1.1.1/32 is imported from RTA, what is the AS_Path attribute of this route to be advertised to RTF?
2. When route 1.1.1.1/32 is imported from RTC, what is the AS_Path attribute of this route to be advertised to RTA?
3. When route 1.1.1.1/32 is imported from RTC, what is the AS_Path attribute of this route to be advertised to RTE?

The attributes are as follows:

- A. (65001) 100; 200; (65002)
- B. (65001) 200 100; (65002) (65001) 200; (65002)
- C. (65003) (65001) 200 100; 200; 200
- D. 100; 200; empty

ANSWER: A

QUESTION NO: 5

Which functions does the bearer network NMS mainly provide?

- A. Monitoring network traffic
- B. Switchover time of a device's active/standby system
- C. Monitoring device load(CPU and Memory)

D. Packet loss delay

ANSWER: A C D

QUESTION NO: 6

As shown in the figure, the costs of paths from RTA to RT 11, RT 12, RT 13, RT 14, and RT 15 are all 10 and the available bandwidth is 200 Mbit/s.

The costs of paths from RTB to RT 31, RT 32, RT 33, RT 34, and RT 35 are all 10 and the available bandwidth is 200 Mbit/s.

The costs of paths from RT 11 to RT 21 and from RT 21 to RT 31 are both 5. The available bandwidth is 200 Mbit/s.

The cost of the path from RT 12 to RT 32 is 5 and the available bandwidth is 120 Mbit/s. The cost of the path from RT 13 to RT 33 is 10 and the available bandwidth is 80 Mbit/s.

The cost of the path from RT 14 to RT 34 is 10 and the available bandwidth is 100 Mbit/s. The cost of the path from RT 15 to RT 35 is 10 and the available bandwidth is 100 Mbit/s. The load balancing rule of Constraint Shortest Path First (CSPF) is set to Random on RTA. Which path will a 100 Mbit/s tunnel from RTA to RTB take?

- A. RTA-RT11-RT21-RT31-RTB
- B. RTA-RT12-RT32-RTB
- C. RTA-RT13-RT33-RTB
- D. RTA-RT14-RT34-RTB
- E. RTA-RT15-RT35-RTB

ANSWER: D E

QUESTION NO: 7

The secure sockets layer (SSL) protocol mainly provides confidentiality and reliability between communication applications. It is found at the transport layer and the application layer, and

provides encrypted data transmission. Which of the following protocols are required for encrypted data transmission?

- A. Handshake protocol
- B. Tunnel protocol
- C. Record protocol

D. Alarm protocol

ANSWER: A C D

QUESTION NO: 8

As shown in the figure, PE 1 sets up an MP-IBGP neighbor relationship with PE 2 and they communicate over MPLS LDP. A CE communicates with a PE over EBGP. Add two entries to the routing table of the VRF on PE 1:

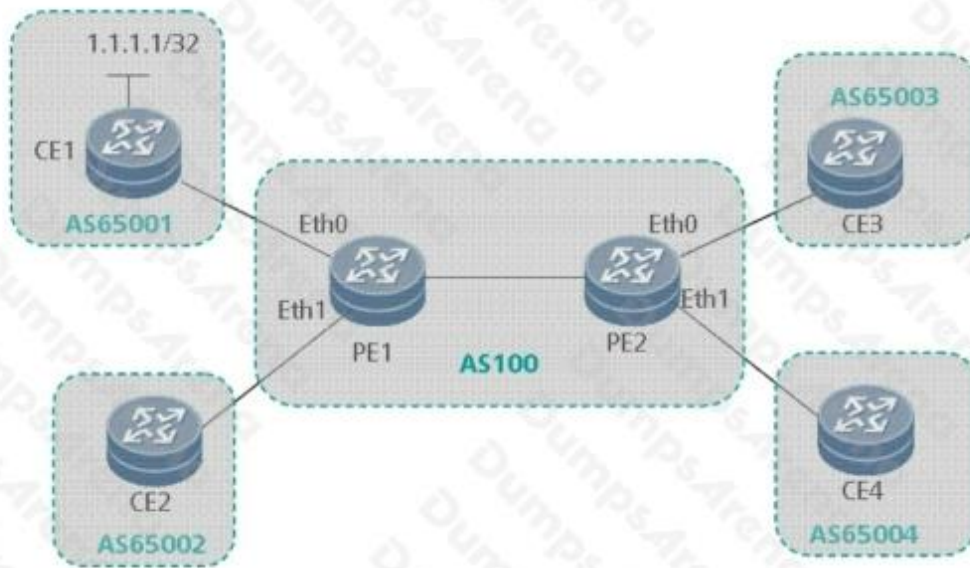
VRF1 RD 100:1, IRT 1:1, ERT 2:2 VRF2 RD 100:2, IRT 1:1, 2:2, ERT 2:2, 3:3

Add two entries to the routing table of the VRF on PE 2:

VRF1 RD 100:1, IRT 1:1, ERT 2:2

VRF2 RD 100:2, IRT 2:2, ERT 1:1

Import a valid static route 1.1.1.1/32 on CE 1. Suppose CE 2, CE 3, and CE 4 do not have route 1.1.1.1/32 in the local routing table. Which of the following routers have route 1.1.1.1/32 in the unicast routing table?



- A. PE 1
- B. CE 2
- C. CE 3
- D. CE 4

ANSWER: B D

QUESTION NO: 9

Refer to the exhibit.



As shown in the topology, RTB directly connects to RTC through the POS interface. To implement the TE function, RTB and RTC are configured as follows: Configuration of RTB:

```
mpls lsr-id 2.2.2.2 mpls
mpls te mpls rsvp-te mpls te cspf #
isis 1
is-level level-2
cost-style compatible
network-entity 00.2222.2222.2222.00 traffic-eng level-1-2
log-peer-change #
interface Pos4/1/0 clock master
link-protocol ppp
ip address 22.33.22.33 255.255.0.0
isis enable 1 mpls
```

mpls templs rsvp-te Configuration of RTC:

```
#
mpls lsr-id 3.3.3.3 mpls
mpls te mpls rsvp-te mpls te cspf #
isis 1
is-level level-2 cost-style wide
```

```
network-entity 00.3333.3333.3333.00 traffic-eng level-1-2
```

```
log-peer-change # #
```

```
interface Pos5/1/0 link-protocol ppp
```

```
ip address 22.33.33.22 255.255.0.0
```

```
isis enable 1 mpls
```

```
mpls te mpls rsvp-te
```

When a neighbor relationship is set up between RTB and RTC and becomes robust, the following information can be found in the LSDB of RTB.

Database information for IS-IS(1)

Level-2 Link State Database

LSPID Seq Num Checksum Holdtime Length ATT/P/OL 2222.2222.2222.00-00* 0x00007191 0x6689 1190 239 0/0/0

SOURCE 2222.2222.2222.00 NLPID IPV4

AREA ADDR 00

INTF ADDR 22.33.22.33

NBR ID 3333.3333.3333.00 COST: 10

+NBR ID 3333.3333.3333.00 COST: 10

IP-Internal 22.33.0.0 255.255.0.0 COST: 10

+IP-Extended 22.33.0.0 255.255.0.0 COST: 10

Router ID 2.2.2.2

3333.3333.3333.00-00 0x0000001c 0x14a3 1184 188 0/0/0

SOURCE 3333.3333.3333.00 NLPID IPV4

AREA ADDR 00INTF ADDR 22.33.33.22

+NBR ID 2222.2222.2222.00 COST: 10

+IP-Extended 22.33.0.0 255.255.0.0 COST: 10

Router ID 3.3.3.3

Two records are generated for the same NBR ID, as shown in bold fonts. Which statement is true?

A. The cost-style parameter of RTB is compatible. Therefore, two type-length-values (TLVs) (No.2 TLV and No.22 TLV) are generated locally. The two TLVs are the same in size.

B. The cost-style parameter of RTB is compatible. Therefore, two TLVs (No.2 TLV and No.22 TLV) are generated locally. No.2 TLV is smaller than No.22 TLV.

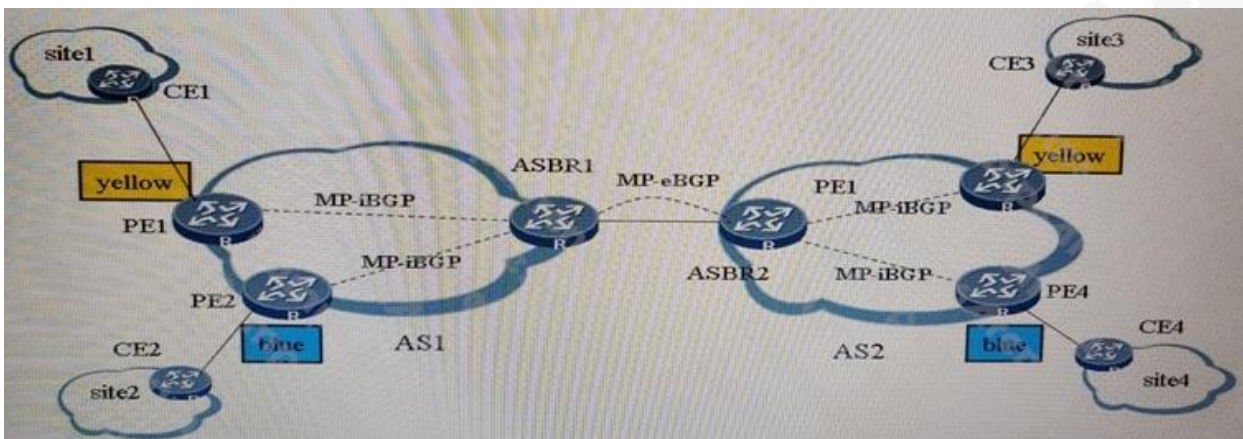
C. The cost-style parameter of RTB is compatible. Therefore, two TLVs (No.2 TLV and No.22 TLV) are generated locally. No.2 TLV is larger than No.22 TLV.

D. It is an error indicating that the NBR TLV of a neighbor is added twice

ANSWER: B

QUESTION NO: 10

Exhibit.



Which statement about inter-AS MPLS VPN Option_B is false?

- A. The ASBR cannot be used as a PE simultaneously and a CE cannot be connected to an ASBR.
- B. When ASBRs are directly connected, packets transmitted on the VPN between them have only one label.
- C. The undo policy vpn-target command must be configured in the VPN4 address family view of the BGP neighbor of the ASBR to prevent routes from being filtered automatically.
- D. When ASBRs are directly connected, VPN traffic can be forwarder between them only after MPLS is enabled on the interfaces.

ANSWER: A