

DUMPS ARENA

Wireshark Certified Network Analyst

Wireshark WCNA

Version Demo

Total Demo Questions: 10

Total Premium Questions: 100

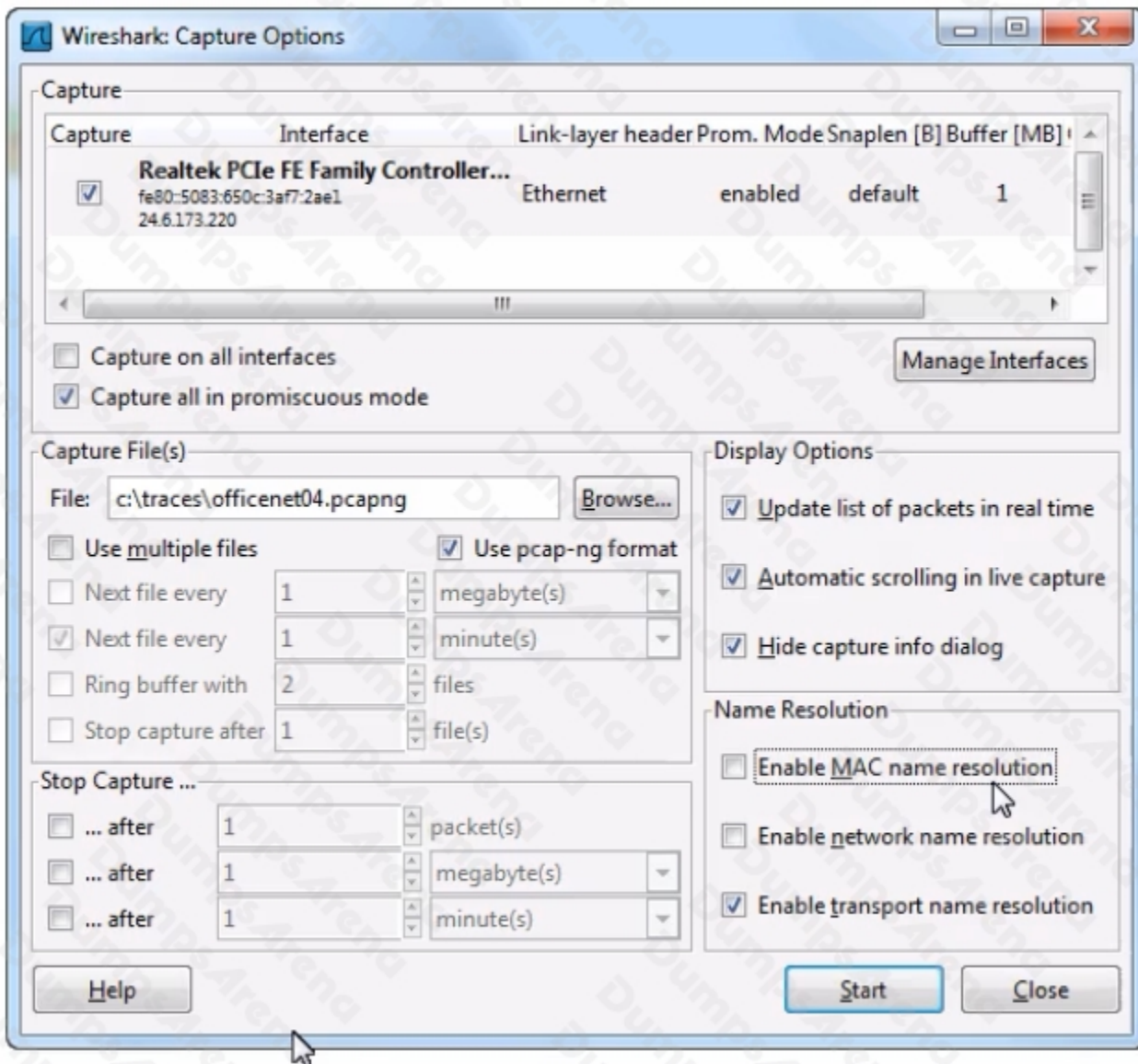
Buy Premium PDF

<https://dumpsarena.com>

sales@dumpsarena.com

dumpsarena.com

QUESTION NO: 1



Which statement about the Capture Options window shown is correct?

- A. Wireshark will resolve IP addresses to host names.
- B. Wireshark will scroll to display the most recent packet captured.
- C. Wireshark will attempt to resolve OUI values for all MAC addresses.
- D. Wireshark will automatically stop capturing packets after two files have been saved.

ANSWER: B

QUESTION NO: 2

The Protocol Hierarchy Statistics window helps identify unusual protocols and applications in captured traffic.

- A. True
- B. False

ANSWER: A

QUESTION NO: 3

An unusually high number of RSTs or a high number of SYN/ACKs with no related data transfer is a strong indication that a TCP scan is underway.

- A. True
- B. False

ANSWER: A

QUESTION NO: 4

Time reference packets are permanently given a timestamp of 00:00:00. When you close and reopen the trace file the time reference information is retained.

- A. True
- B. False

ANSWER: B

QUESTION NO: 5

Columns can be reordered by dragging them into their new positions directly in the Packet List pane.

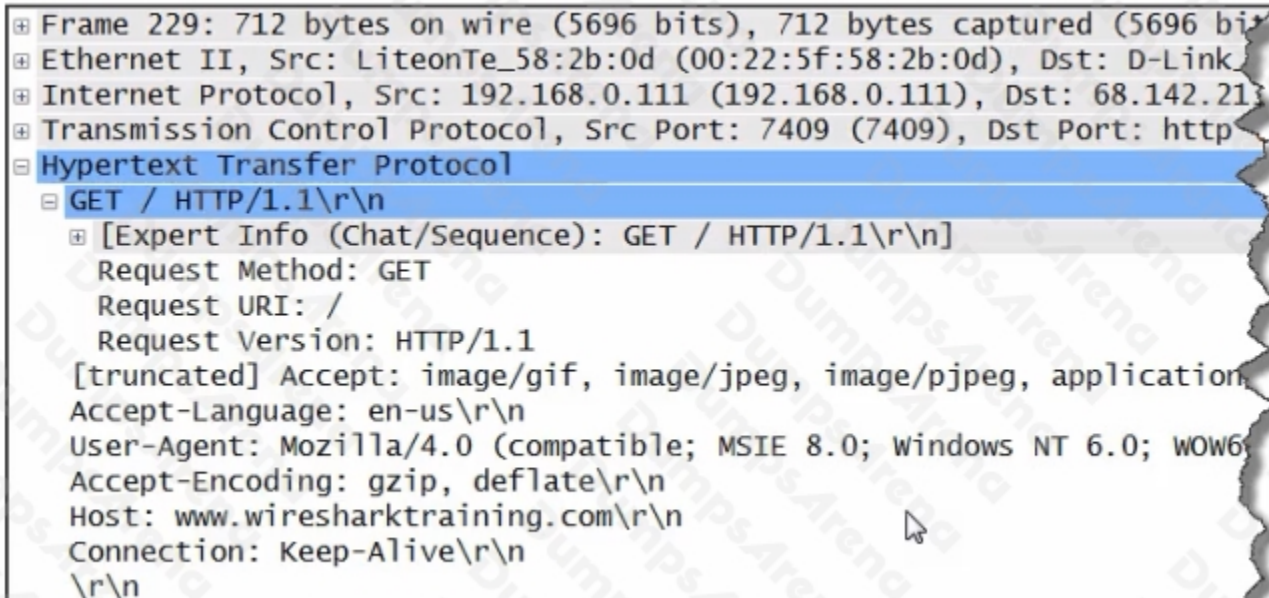
- A. True
- B. False

ANSWER: A

QUESTION NO: 6

Which statement about the TCP recovery process is true?

- A. Packet loss recovery is always started by the client.
- B. The window size field is used in the packet loss recovery process.
- C. TCP hosts attempt three retransmissions before terminating the connection.
- D. Retransmitted packets use the same sequence number as the original lost packet.

ANSWER: D**QUESTION NO: 7**

The image shows a Wireshark packet capture of an HTTP GET request. The packet list on the left shows Frame 229, which is an Ethernet II packet from LiteonTe_58:2b:0d to D-Link, containing an Internet Protocol packet from 192.168.0.111 to 68.142.21, which in turn contains a Transmission Control Protocol packet from port 7409 to port http, and finally a Hypertext Transfer Protocol packet. The packet details pane on the right shows the structure of the HTTP packet: GET / HTTP/1.1\r\n. The [Expert Info (Chat/Sequence)] pane shows the request details: Request Method: GET, Request URI: /, Request Version: HTTP/1.1, [truncated] Accept: image/gif, image/jpeg, image/pjpeg, application, Accept-Language: en-us\r\n, User-Agent: Mozilla/4.0 (compatible; MSIE 8.0; Windows NT 6.0; WOW6, Accept-Encoding: gzip, deflate\r\n, Host: www.wiresharktraining.com\r\n, Connection: Keep-Alive\r\n, \r\n.

Which statement about this HTTP packet is correct?

- A. This packet was sent from an HTTP server.
- B. The packet contains a request for a graphic file.
- C. This packet contains an invalid HTTP Request Method.
- D. This packet indicates an HTTP client is browsing www.wiresharktraining.com.

ANSWER: D

QUESTION NO: 8

DHCP is based on BOOTP.

- A. True
- B. False

ANSWER: A

QUESTION NO: 9

Which name resolution process translates port numbers to service names if they are listed in Wireshark's services file?

- A. SMI name resolution
- B. network name resolution
- C. transport name resolution
- D. MAC address name resolution

ANSWER: C

QUESTION NO: 10

The UDP header checksum is optional.

- A. True
- B. False

ANSWER: A