

DUMPS ARENA

Implementing DevOps Solutions and Practices using Cisco Platforms (DEVOPS)

Cisco 300-910

Version Demo

Total Demo Questions: 10

Total Premium Questions: 124

Buy Premium PDF

<https://dumpsarena.com>

sales@dumpsarena.com

dumpsarena.com

Topic Break Down

Topic	No. of Questions
Topic 1, New Update	65
Topic 2, CI/CD Pipeline	12
Topic 3, Packaging and Delivery of Applications	14
Topic 4, Automating Infrastructure	12
Topic 5, Cloud and Multicloud	6
Topic 6, Logging, Monitoring, and Metrics	9
Topic 7, Security	6
Total	124

QUESTION NO: 1

When DevOps practices are integrated into an existing organization, which two characteristics are positive indicators of DevOps maturity? (Choose two.)

- A. mean time between success
- B. mean time to recover
- C. cone testing
- D. change lead time
- E. age of codebase

ANSWER: B D

QUESTION NO: 2

A developer is nearing the end of a software development cycle and is ready to deploy the software. The customer wants to continue using a secure software development lifecycle methodology and must plan for postproduction components. Which two areas should be the developer address? (Choose two.)

- A. performing code reviews
- B. requirement gathering
- C. change management process
- D. new code scanning
- E. rollback plans

ANSWER: A D

QUESTION NO: 3 - (DRAG DROP)

-

A developer is creating an application where each service uses a different operating system. The application components need to be isolated but must have the ability to communicate with each other.

Drag and drop the entries from the left into the order on the right to create a Dockerfile that will accomplish this goal.

ENV CONFIG_PATH=/etc/application/conf/	step 1
ENTRYPOINT /path/to/the/app/entrypoint.sh	step 2
FROM example.com/application:latest	step 3
ADD config.ini \${CONFIG_PATH}	step 4

ANSWER:

ENV CONFIG_PATH=/etc/application/conf/	FROM example.com/application:latest
ENTRYPOINT /path/to/the/app/entrypoint.sh	ENV CONFIG_PATH=/etc/application/conf/
FROM example.com/application:latest	ENTRYPOINT /path/to/the/app/entrypoint.sh
ADD config.ini \${CONFIG_PATH}	ADD config.ini \${CONFIG_PATH}

Explanation:

	FROM example.com/application:latest
	ENV CONFIG_PATH=/etc/application/conf/
Correct Answer:	ADD config.ini \${CONFIG_PATH}
	ENTRYPOINT /path/to/the/app/entrypoint.sh

QUESTION NO: 4

Refer to the exhibit.

```
<34>1 2020-10-11T22:14:15.003Z 161.20.30.44 su - ID47 - BCM'su root' failed for DevNetUser on /dev/pts/8
```

The text represents a syslog message sent from a Linux server to a centralized log system.

Based on the format of the log message, how must the functionality of the log parser be extended to improve search capabilities?

A. Reverse lookup the IP address to add a hostname field

- B. Convert the date to the time zone of the system
- C. Configure the Linux machine to add a UID field to messages
- D. Filter out the text of the message to speed up searches

ANSWER: A

QUESTION NO: 5

Which Docker command is used to start an interactive Bash shell in a running container named "test"?

- A. docker attach -it test /bin/bash
- B. docker run -it test /bin/bash
- C. docker exec -it test /bin/bash
- D. docker run test /bin/bash

ANSWER: C

QUESTION NO: 6

What are two advantages of using Configuration Management Tools? (Choose two.)

- A. reduction in policy violations caused by human errors
- B. reduction in administration costs
- C. reduction in network changes already performed automatically
- D. reduction of on-premises networking equipment
- E. reduction in networking team skills

ANSWER: A B

Explanation:

Configuration Management Tools allow for automated configuration of networking equipment, which helps to reduce human errors and the time and money needed to manage and configure the equipment. For example, Cisco Configuration Professional (CCP) is a configuration management tool that provides automated configuration, validation, and troubleshooting of network infrastructure devices. CCP enables administrators to configure and deploy network changes quickly and efficiently, while also reducing the costs associated with manual configuration and troubleshooting.

QUESTION NO: 7

Which Dockerfile yields the most predictable builds?

A)

```
FROM python:3.8.0b2-buster  
  
RUN apt update -y  
RUN apt upgrade -y  
RUN apt install git -y  
  
RUN pip install requests==2.22.0
```

B)

```
FROM python  
  
RUN apt update -y  
RUN apt upgrade -y  
RUN apt install git -y  
  
RUN pip install requests
```

C)

```
FROM python:3.8.0b2-buster  
  
RUN apt update -y  
RUN apt install git -y  
  
RUN pip install requests==2.22.0
```

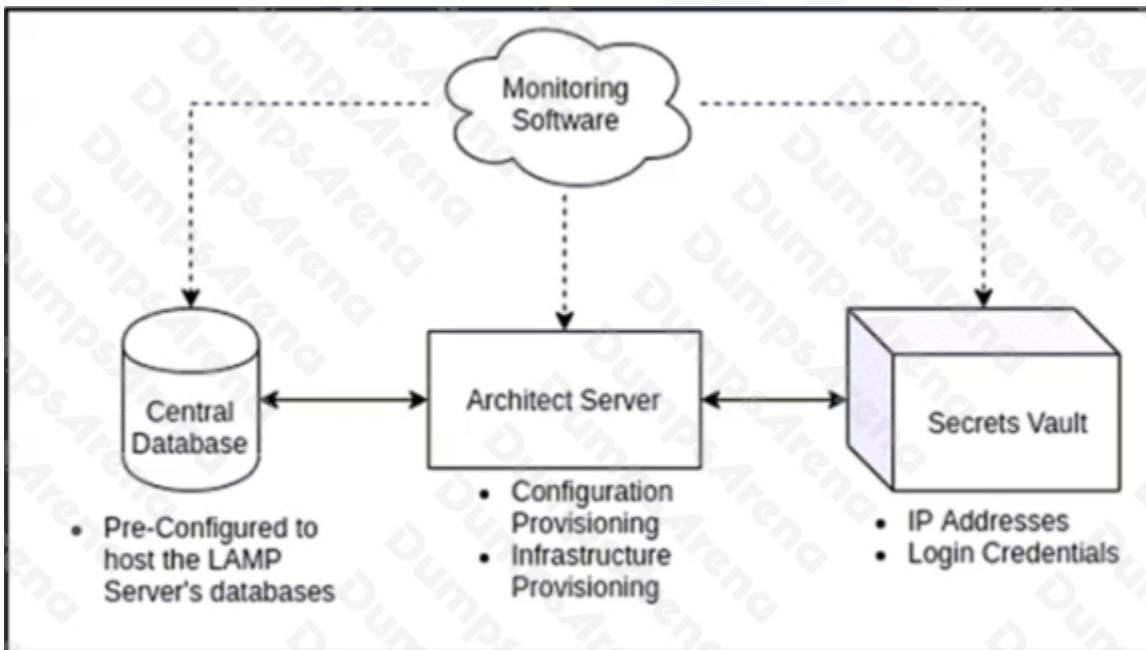
D)

```
FROM python:latest
RUN apt update -y
RUN apt install git -y
RUN pip install requests==2.22.0
```

- A. Option A
- B. Option B
- C. Option C
- D. Option D

ANSWER: C

QUESTION NO: 8 - (DRAG DROP)



Refer to the exhibit. A containerized application that leverages a container host VM must be deployed. Drag and drop the events on the left onto their related steps on the right in order to describe the sequence behind the process.

The configuration management tool instructs the monitoring software to monitor the containers and rendered services for usage metrics and signals the container host VM to change the number of active containers.

step 1

The configuration provisioning tool connects to the container host VM and installs required packages including the container management tool. Finalizing updates, the configuration provisioning tool injects commands to create an SSH tunnel to connect to the central database.

step 2

The infrastructure provisioning tool creates a dedicated virtual machine to host the container host VM, and then communicates with the secrets vault to access predefined credentials and connects to the virtual machine to install future requirements or dependencies.

step 3

The container management tool initializes several containers that host Apache and PHP and signals the architect server, triggering the injection of the web hosting payload.

step 4

ANSWER:

The configuration management tool instructs the monitoring software to monitor the containers and rendered services for usage metrics and signals the container host VM to change the number of active containers.

The infrastructure provisioning tool creates a dedicated virtual machine to host the container host VM, and then communicates with the secrets vault to access predefined credentials and connects to the virtual machine to install future requirements or dependencies.

The configuration provisioning tool connects to the container host VM and installs required packages including the container management tool. Finalizing updates, the configuration provisioning tool injects commands to create an SSH tunnel to connect to the central database.

The configuration provisioning tool connects to the container host VM and installs required packages including the container management tool. Finalizing updates, the configuration provisioning tool injects commands to create an SSH tunnel to connect to the central database.

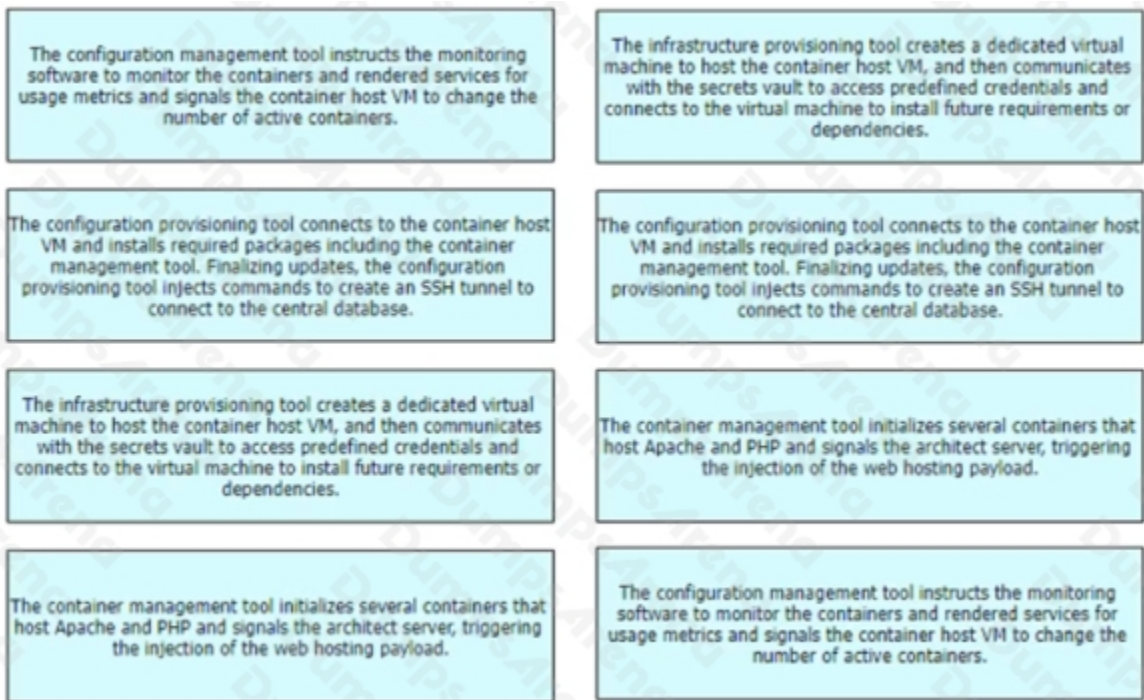
The infrastructure provisioning tool creates a dedicated virtual machine to host the container host VM, and then communicates with the secrets vault to access predefined credentials and connects to the virtual machine to install future requirements or dependencies.

The container management tool initializes several containers that host Apache and PHP and signals the architect server, triggering the injection of the web hosting payload.

The container management tool initializes several containers that host Apache and PHP and signals the architect server, triggering the injection of the web hosting payload.

The configuration management tool instructs the monitoring software to monitor the containers and rendered services for usage metrics and signals the container host VM to change the number of active containers.

Explanation:

**QUESTION NO: 9**

A DevOps engineer has built a container to host a web-server and it must run as an executable. Which command must be configured in a Dockerfile to accomplish this goal?

- A. ENTRYPOINT
- B. ENTRYPOINT ["/usr/sbin/apache2ctl", "-D", "FOREGROUND"]
- C. ENTRYPOINT ["BACKGROUND", "-D", "/usr/sbin/apache2ctl"]
- D. ENTRYPOINT {usr/sbin/apache2ctl}

ANSWER: B

QUESTION NO: 10

Which two practices help make the security of an application a more integral part of the software development lifecycle? (Choose two.)

- A. Add a step to the CI/CD pipeline that runs a dynamic code analysis tool during the pipeline execution.
- B. Add a step to the CI/CD pipeline that runs a static code analysis tool during the pipeline execution.
- C. Use only software modules that are written by the internal team.

- D.** Add a step to the CI/CD pipeline to modify the release plan so that updated versions of the software are made available more often.
- E.** Ensure that the code repository server has enabled drive encryption and stores the keys on a Trusted Platform Module or Hardware Security Module.

ANSWER: A E

DUMPSARENA