

# DUMPS ARENA

**Backup & Recovery Specialist for Storage Administrators**

**EMC E20-597**

**Version Demo**

**Total Demo Questions: 15**

**Total Premium Questions: 378**

**Buy Premium PDF**

**<https://dumpsarena.com>**

**[sales@dumpsarena.com](mailto:sales@dumpsarena.com)**

**dumpsarena.com**

Topic Break Down

Topic	No. of Questions
Topic 1, Volume A	80
Topic 2, Volume B	298
Total	378

**QUESTION NO: 1**

An EMC NetWorker Administrator wants to start all of the EMC NetWorker processes on a Solaris server.

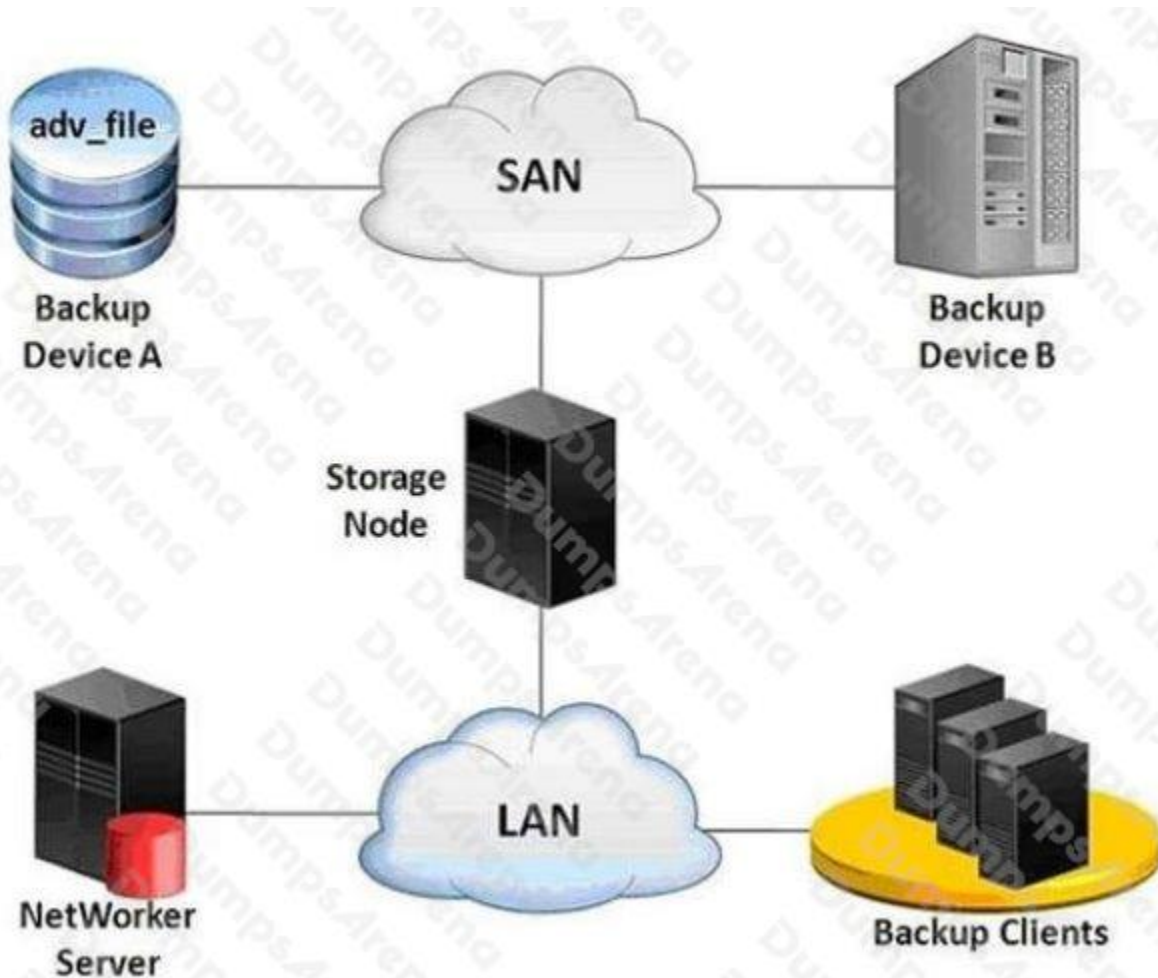
Which command would run?

- A. `/etc/init.d/networker start`
- B. `/etc/rc2.d/gst start`
- C. `/sbin/int.d/networker start`
- D. `/sbin/init.d/gst start`

**ANSWER: A**

**QUESTION NO: 2**

Refer to the exhibit.



A backup administrator configures an EMC NetWorker staging policy to move save sets from backup Device A to backup Device

B. A restore session is started and requires save sets that were staged to Device B.

What is the data flow in this recovery?

A. Data goes from Device B through the storage node and then to the client.

B. A restore session is started and requires save sets that were staged to Device B.

What is the data flow in this recovery?

Data is reconstructed from Device B to Device A through the storage node and then sent back to the client.

C. Data goes from Device B through the storage node to the EMC NetWorker server and then to the client.

D. Data is restored to the storage node and copied to the client.

**ANSWER: A**

**QUESTION NO: 3**

Why is a full backup needed to create a disaster recovery backup within EMC NetWorker?

- A. DISASTER\_RECOVERY:\ save set is backed up only during full backups
- B. VSS SYSTEM save sets are backed up only during full backups
- C. VSS backups of DISASTER\_RECOVERY:\ are not enabled if an incremental backup is initiated
- D. VSS SYSTEM FILESET: save set is backed up only during full backups

**ANSWER: A**

#### QUESTION NO: 4

What is a characteristic of using EMC NetWorker Snapshot Management?

- A. Leverages storage system-based snapshot technology
- B. Must be licensed separately from the capacity licensing model
- C. Replaces the NetWorker SnapImage module
- D. Requires a separate software installation on the NetWorker client

**ANSWER: A**

#### QUESTION NO: 5

What is one of the features available with VADP (vStorage APIs for Data Protection) in EMC NetWorker?

- A. Option to leverage change block tracking (CBT) feature.
- B. File level recovery is available from Linux image level .vmdk backups.
- C. Single Step VM Recovery to the original machine only.
- D. EMC NetWorker VADP proxy can be a physical server only.

**ANSWER: A**

#### QUESTION NO: 6

A storage administrator backs up an Exchange server to an EMC Data Domain system. The Data Domain system is configured as an advanced file device. The administrator now wants to create a copy of the backup and send it to tape. The backup job completed at 8pm. The administrator wants the copy to be created at 9pm.

Which option should be used?

- A. Use the Scheduled Cloning attribute to schedule a clone job to start at 9pm.
- B. Run the nsrclone command at 8pm and the second copy will be directed to tape at 9pm.
- C. Enable the "clones" attribute in the client's group setting.
- D. From the Administration window, under Media select Save Sets and then the Query Save Set tab. Create clone copies of the backup at 8pm.

**ANSWER: A**

#### QUESTION NO: 7

EMC NetWorker is using a library controlled by an ACSLS server. Information about a tape volume was accidentally deleted from the media database.

What is run to recover the information?

- A. scanner
- B. mmrecov
- C. jbcconfig
- D. nsrmm

**ANSWER: A**

#### QUESTION NO: 8

What is a characteristic of an EMC NetWorker advanced file type device?

- A. Duplicate media database records
- B. Duplicate CFIs
- C. Requires CIFS or NFS shares
- D. Requires a separate pool

**ANSWER: A**

#### QUESTION NO: 9

A new Dell EMC NetWorker installation is being integrated with Active Directory for user authentication.

Which command is used to create the relationship between NetWorker Authentication and Active Directory?

- A. nsraddadmin
- B. nsrauthtrust
- C. authc\_mgmt
- D. authc\_config

**ANSWER: D**

#### QUESTION NO: 10

In a Microsoft Windows environment, what is a characteristic of a bare metal recovery when using Dell EMC NetWorker?

- A. Can be used to restore individual files
- B. Can be used for recovery of networker server database
- C. Required when a host encounters a catastrophic failure
- D. Restores only the operating system

**ANSWER: C**

#### QUESTION NO: 11

A backup administrator wants to skip backing up media files in various user directories on a Microsoft Windows client. The media files all have extensions of "WAV", "AVI" or "MP4". A global detective is created as shown below and applied to the client resource.

```
<< / >> skip: *.wav *.avi *.mp4
```

After the next full backup, the administrator notices that none of the media files were skipped.

Why were the media files backed up?

- A. Three file extensions need to be specified on separate lines in the directive.
- B. File extensions are case sensitive so the directive did not match the files.
- C. "/" is not a valid specification for a Windows file system in a directive.
- D. 'skip' does not have a leading "+" in the directive to make it apply recursively.

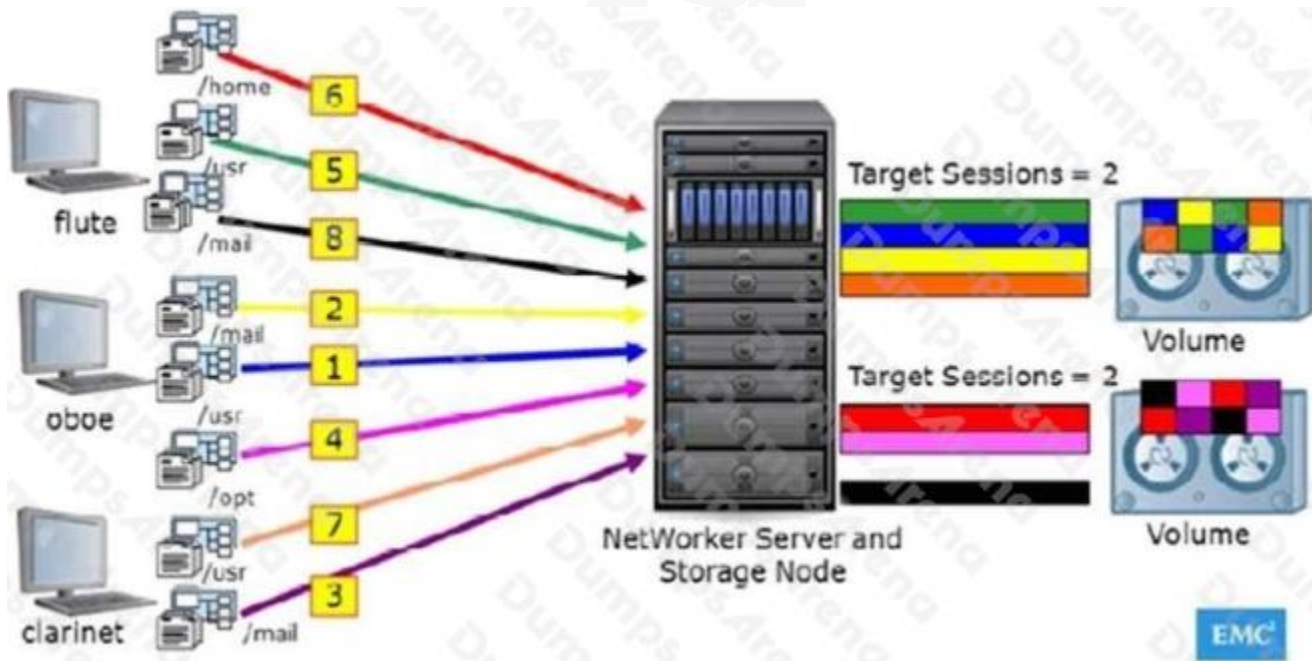
**ANSWER: C****Explanation:**Reference: <https://community.emc.com/thread/200895?start=0&tstart=0>**QUESTION NO: 12**

Which EMC NetWorker process reads and manages the port range information?

- A. nsrexecd
- B. nsrstat
- C. nsrmmd
- D. nsrd

**ANSWER: A****QUESTION NO: 13**

In EMC NetWorker backup environment, server parallelism is set to 8 as shown in the exhibit.



How many save sessions will be directed to each device?

- A. 2
- B. 4



C. 6

D. 8

**ANSWER: B**

**QUESTION NO: 14 - (DRAG DROP)**

DRAG DROP

A backup administrator has configured Dell EMC NetWorker and Data Domain Cloud Tier devices in NMC.

What is the correct process flow of the backup data and control path?

**Select and Place:**

**Answer Area**

Backups are sent to the Data Domain system active tier

Application-based policy clones the data from block storage to object storage in the Data Domain storage unit

Backup data is pushed to the cloud provider based on an age policy controlled by the Data Domain system

NetWorker server sends the backup requests to the clients.

**STEP 1**

**STEP 2**

**STEP 3**

**STEP 4**

**ANSWER:**

## Answer Area

NetWorker server sends the backup requests to the clients.

Backups are sent to the Data Domain system active tier

Application-based policy clones the data from block storage to object storage in the Data Domain storage unit

Backup data is pushed to the cloud provider based on an age policy controlled by the Data Domain system

Explanation:

**QUESTION NO: 15**

In a Dell EMC NetWorker backup environment, server parallelism is set to '8'. There are eight clients and each client has one save set. There are two devices in the backup pool and each device is accessible to all clients. Max sessions are set to '2' for both devices.

How many save sessions will be directed to each device?

- A. 1
- B. 2
- C. 4
- D. 8

**ANSWER: D**